



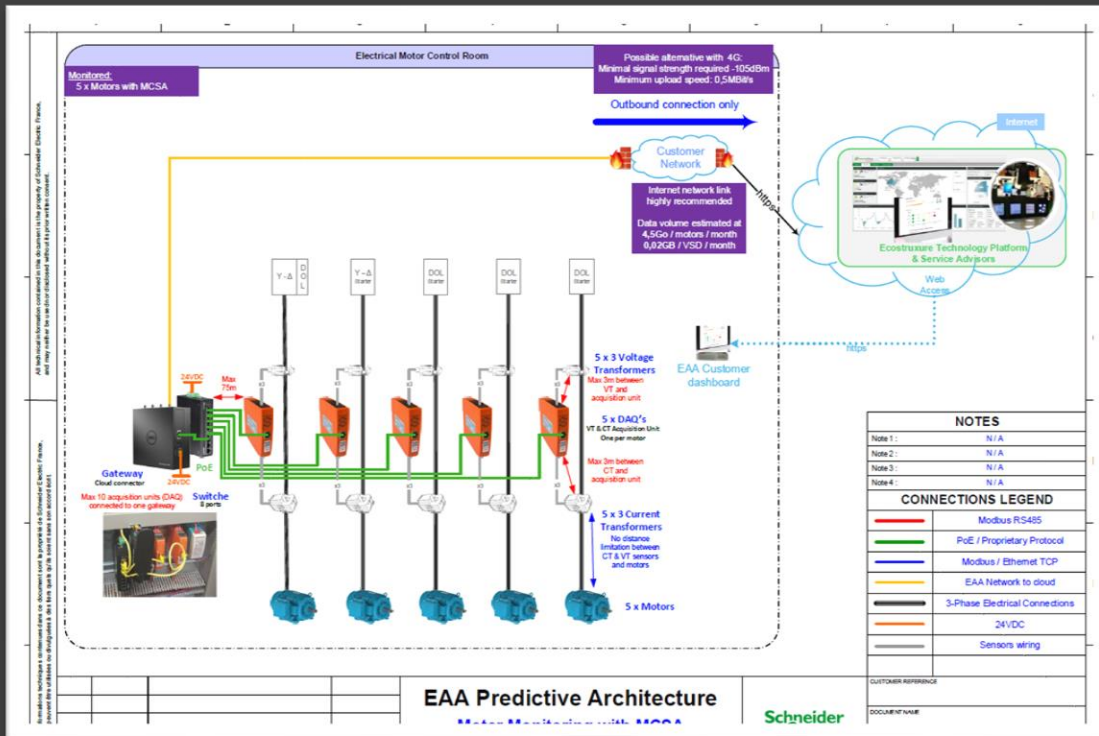
İbrahim KUŞÇU

System Architecture Engineer

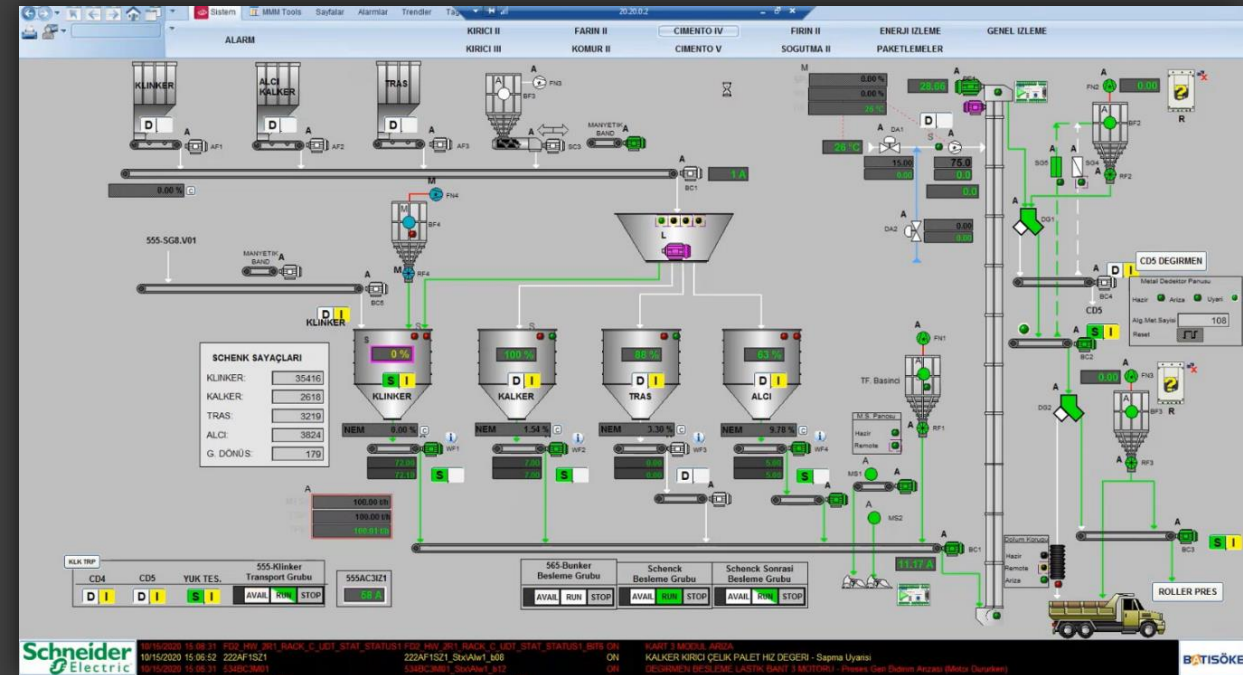
Schneider Electric – System Architect

- Design studies and proposals for Control, Energy Management and design projects.
- Cost analysis on received offers, min cost & max value management.

Design of BMA Asset Management & Control System

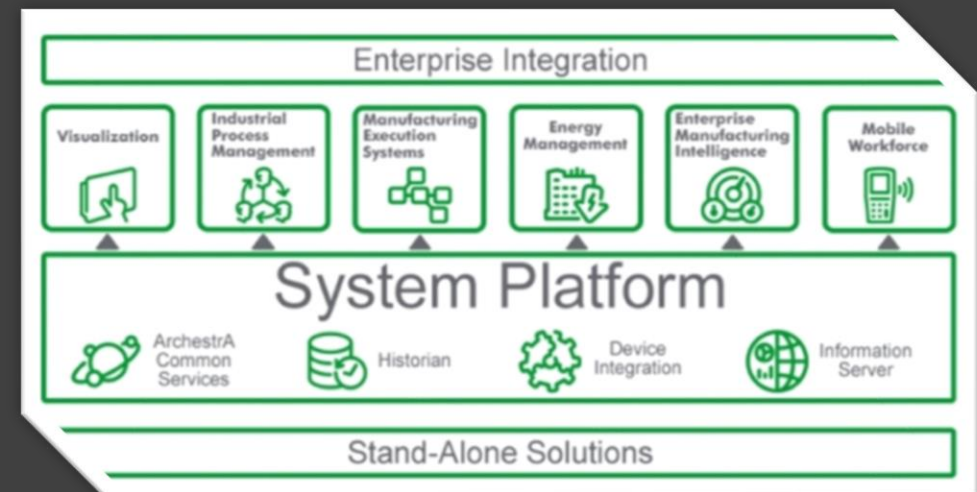
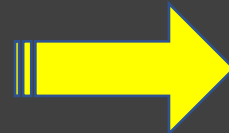
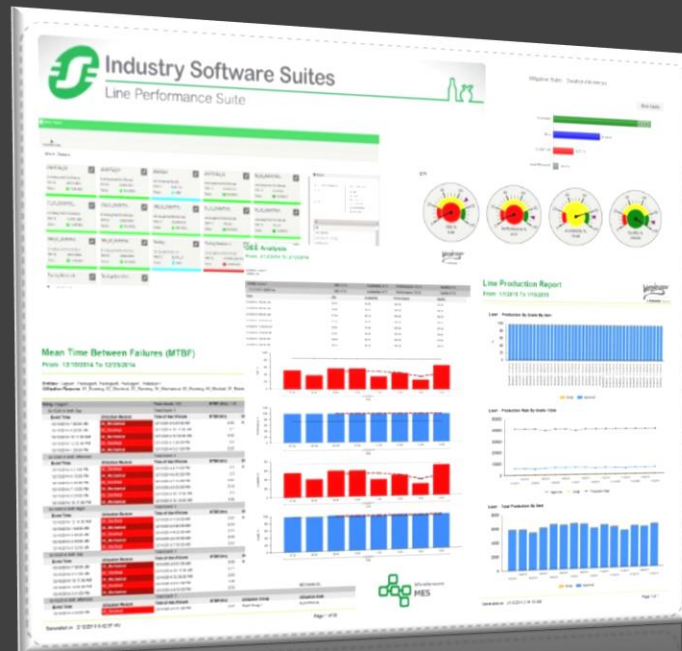


Design of High voltage Power Distribution & Ciment Process



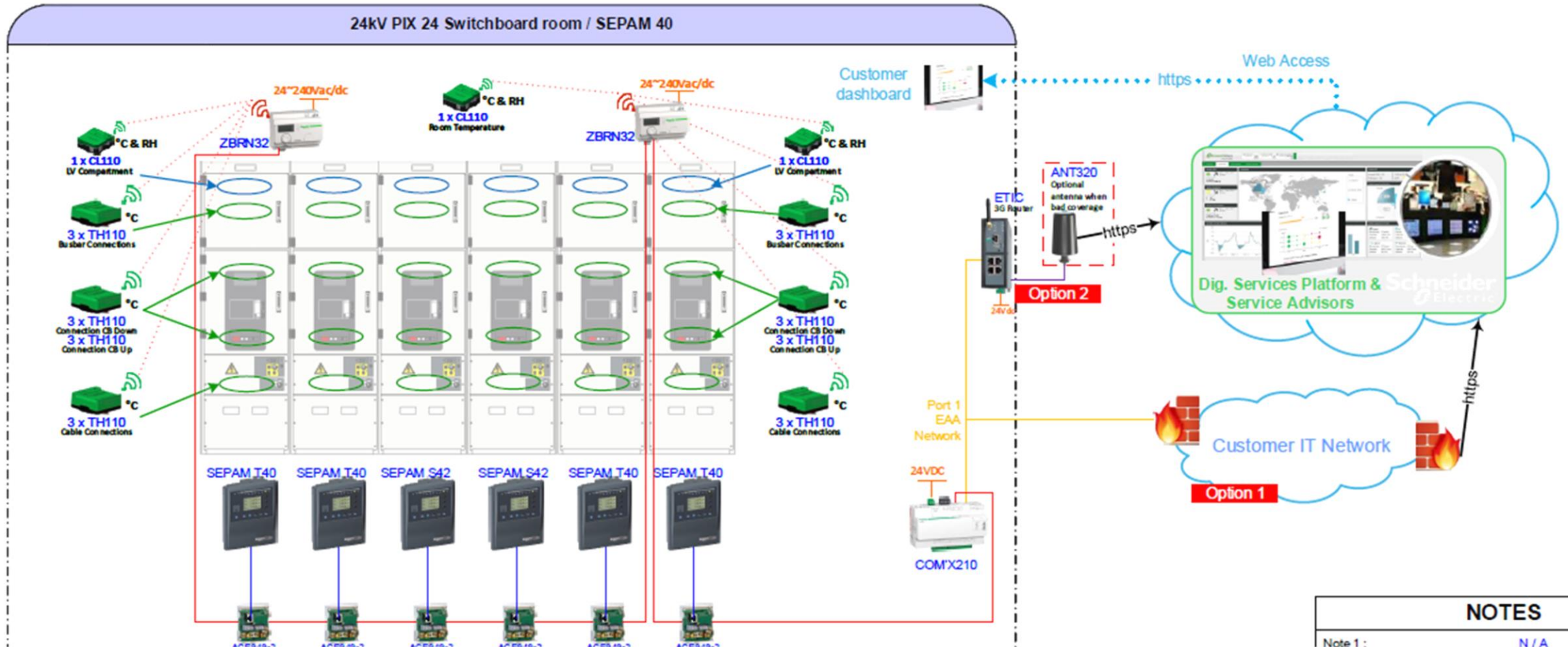
Schneider Electric – System Architect

- Transformation of the last generation production methods,
- Creating the steps of digital transformation & Innovation Roadmap.



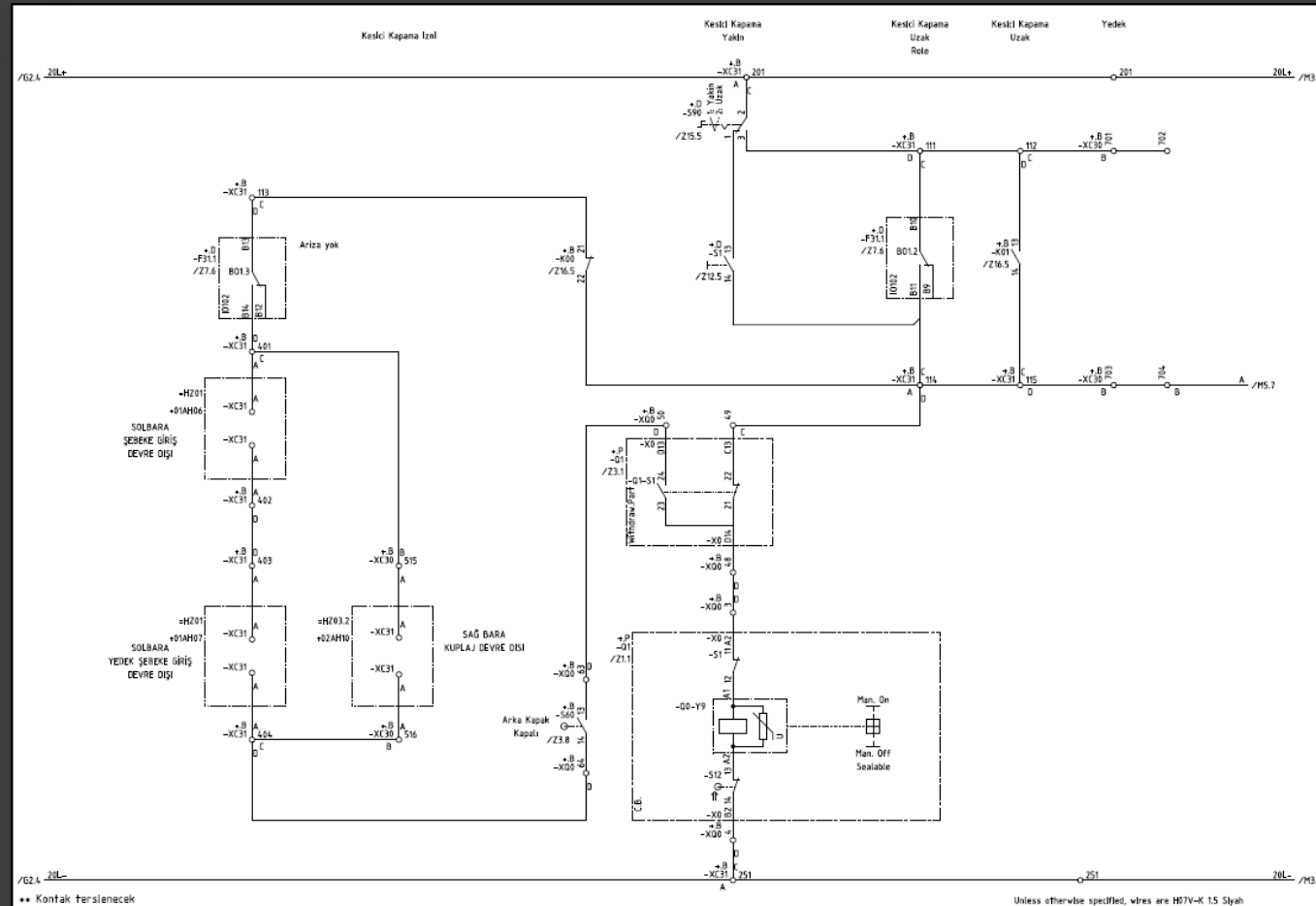
Schneider Electric – System Architect

- Architecture design of HV-MV integration (Switchgears, Motors, Busbar, SCADA)



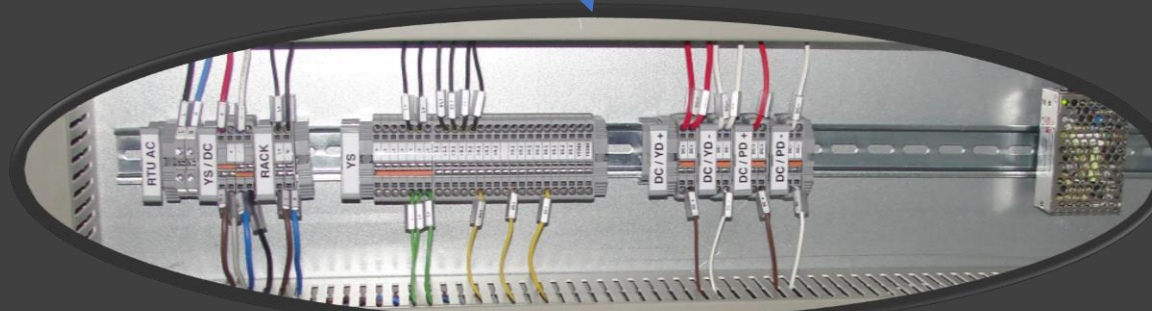
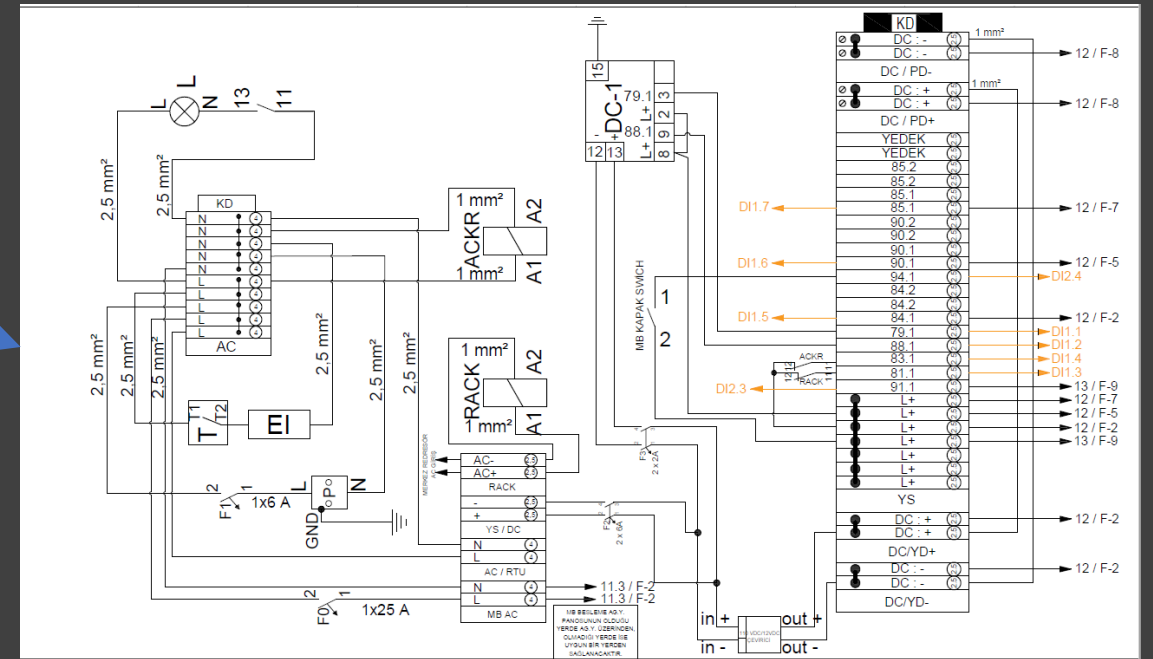
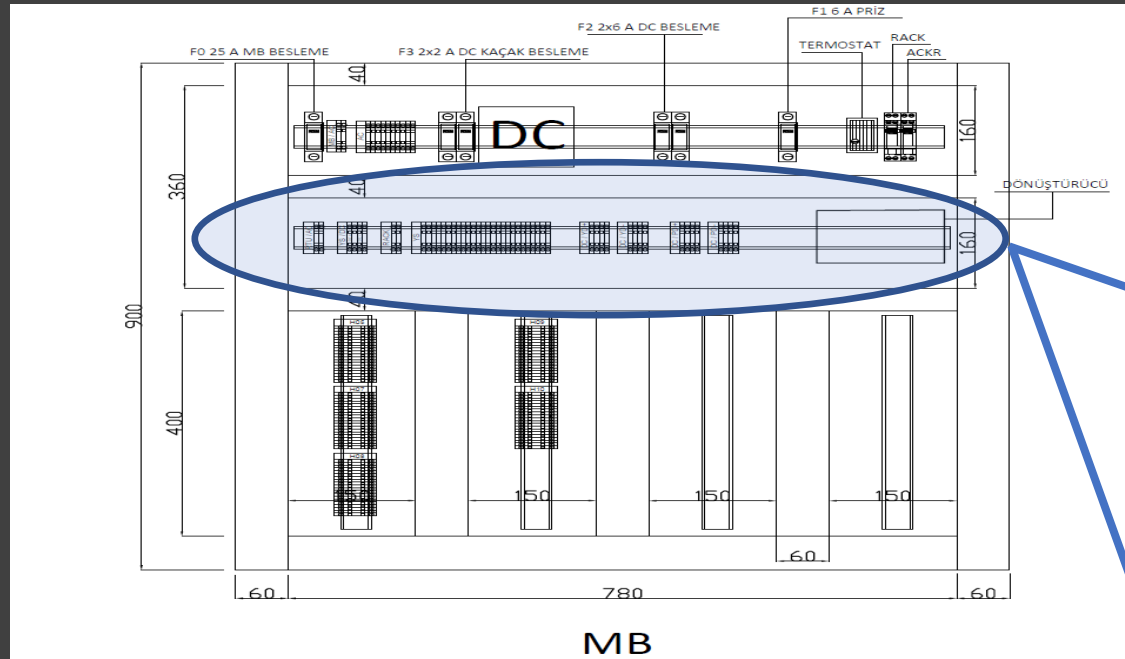
Schneider Electric – System Architect

- HV-MV Busbar design, calculations and interlocks



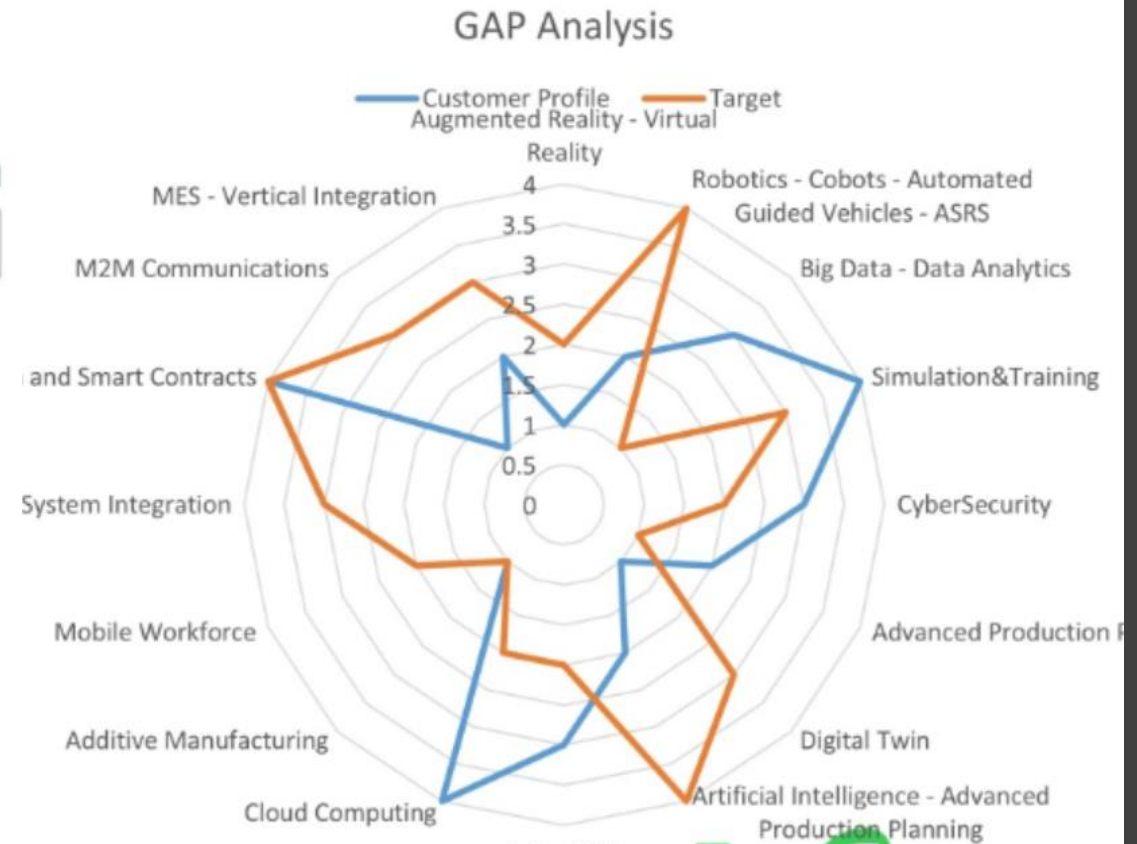
Schneider Electric – System Architect

- Cabling design and calculations of the proposals & projects, DC-DC system



Schneider Electric – System Architect

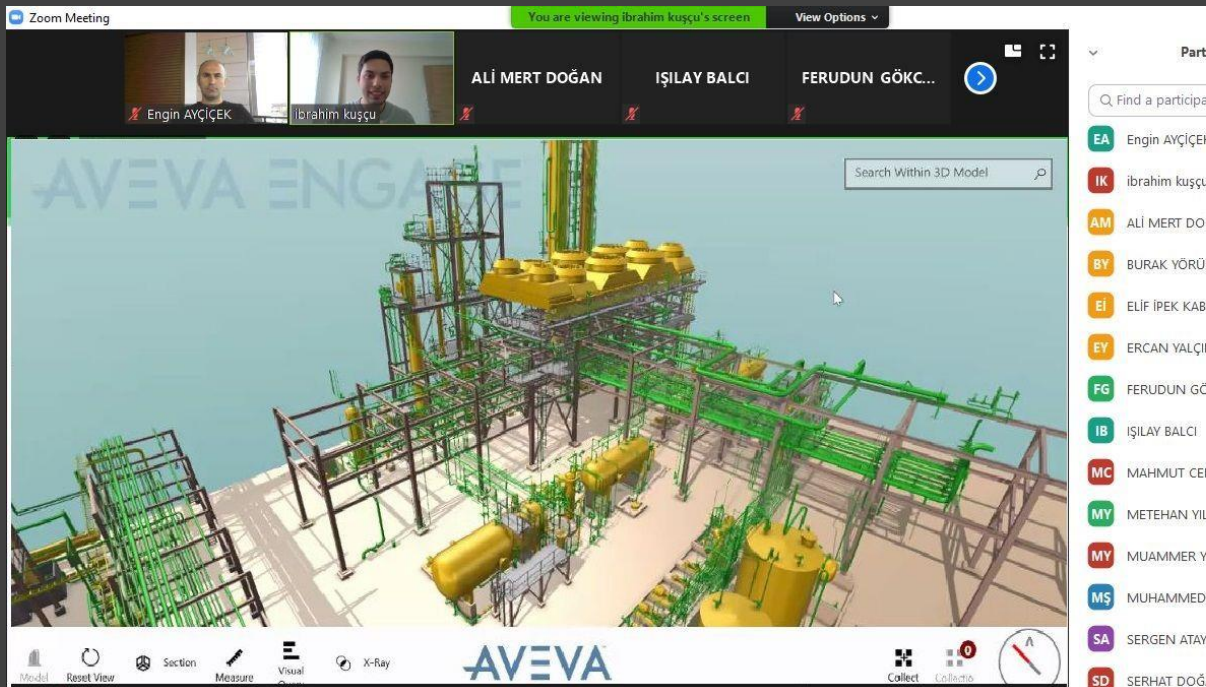
- Harness design for production processes with using Modicon Builder



Yildiz Technical University – Lecturer

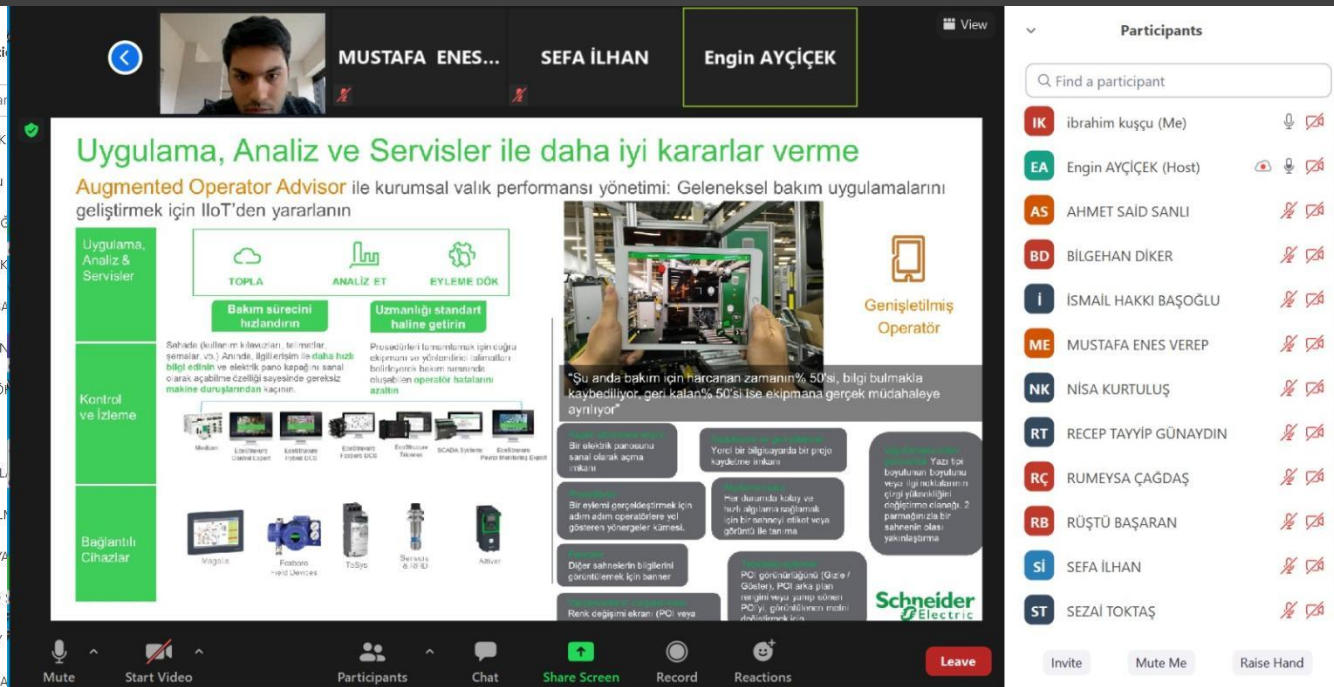
- Successful projects implemented in the industry (installation, R&D, Digital Twin, Simulation, Digitalization of the Processes, Data Collecting, Energy Monitoring & Control, Automation)
- Software and hardwares live Demos

Undergraduate Lesson – Hi Technology in Predictive Maintenance Applications



İbrahim Kuşçu – 16 week – Spring Term'21

Graduate Lesson – R&D 4.0 in Industry



İbrahim Kuşçu – 12 week – Fall Term-'21

Seminars - IEEE Global Events – Organized Industrial Zones

- Industry 4.0 & IIOT
- R&D Simulation
- Digital transformation in industry
- End-to-end facility management with Asset Advisor
- Digitization of predictive maintenance activities
- Cloud Based Advisor IIOT solutions
- Digital Twin solutions
- Facility management with augmented reality (AR)
- New generation production technologies



Schneider Electric
2.858.434 takipçi
6 ay •

Çukurova Üniversitesi'nin bu yıl 13'üncüsü düzenlenecek olan "Kariyer Günleri" etkinliğinde #SchneiderElectric System Integrator Ch. Sales Engineer İbrahim Kuşçu, 6 Mart Cumartesi 16:00'da IEEE Çukurova Youtube canlı ...daha fazla gör

13. KARIYER GÜNLERİ
6 MART CUMARTESİ
16.00-16.50

İBRAHİM KUŞÇU
SYSTEM INTEGRATOR CH. ENGINEER

IEEE Çukurova University



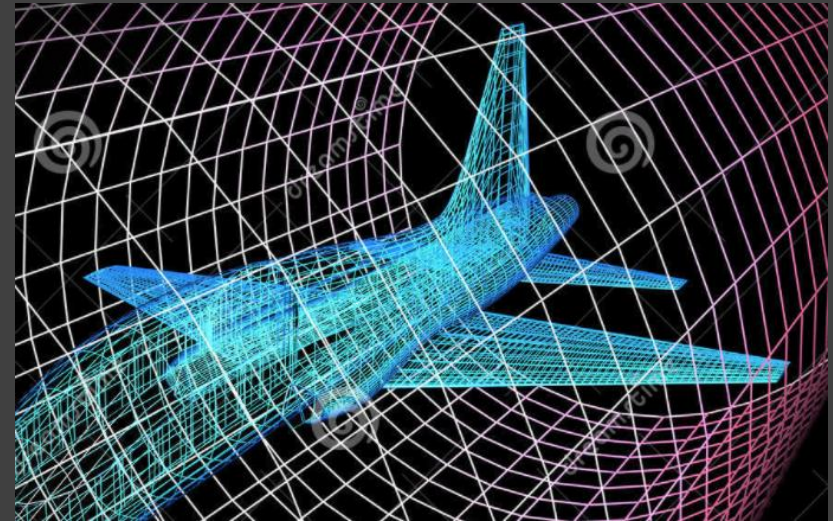
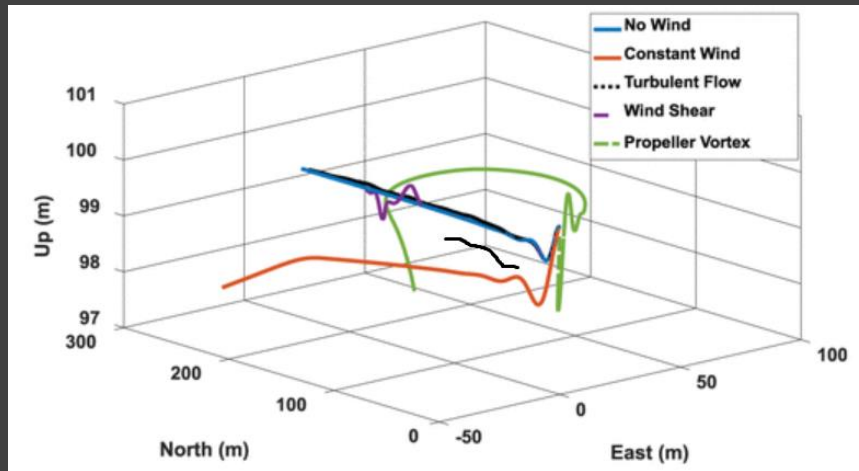
Google Tel Aviv – Simulation & DevOp Project Engineer (Unmanned Aerial Vehicle Project)



- Aircraft system architecture
- System distribution analysis
- DC-DC and charging system examination
- Environmental conditions in Engines & aircraft
- Interconnection Systems (Wire harnesses), on Motor and Engines

Google Tel Aviv – Simulation & DevOp Project Engineer (Unmanned Aerial Vehicle Project)

- The categories of the wind effects on UAV



Problem: Unpredictable and uncontrollable wind effects

Result: Inability to fly stable in the air

Solution: Modeling Embedded Systems Using SysML reshape the model

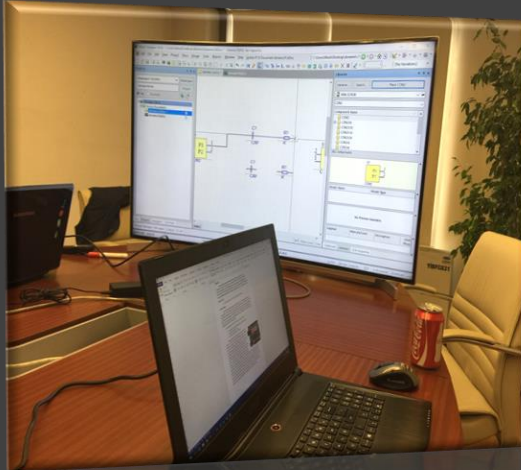
Result: Reduce the negative wind effects on UAV, increase the power performance, stability.

Arcelik (Beko&Grundig)– R&D Project Engineer

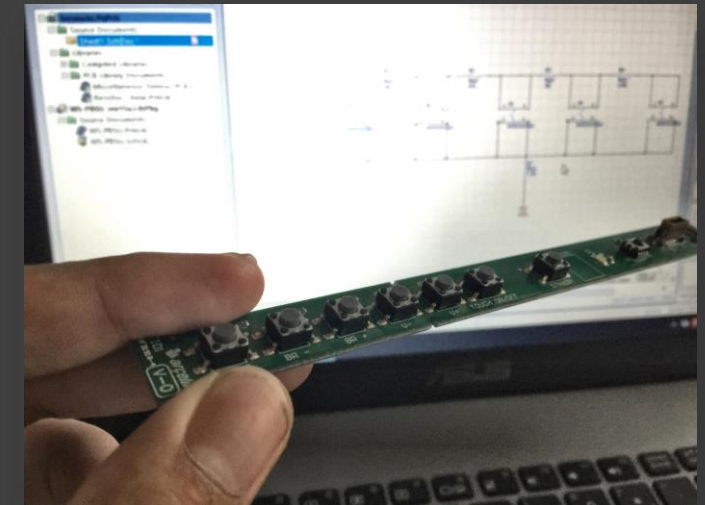


- Supporting electronic board projects (PCB Analysis)
- Designing and making technical improvement on mainboard, Power Supply units DC-DC and control screens
- -Experience in using schematic and PCB design tools
- -Knowledge on microcontrollers (Embedded Systems)

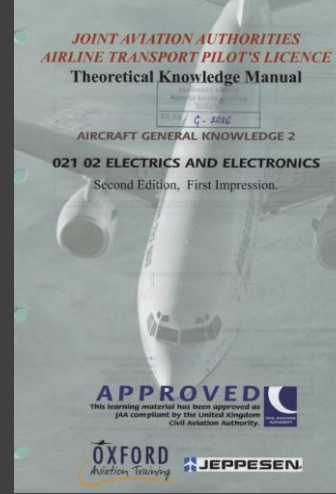
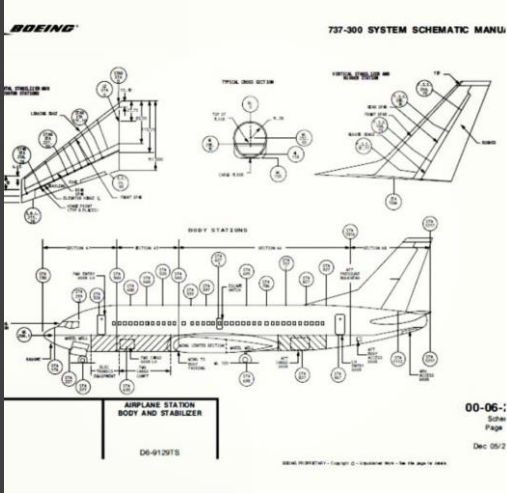
Arcelik (Beko&Grundig)– R&D Project Engineer



- Interconnect wiring
- EMC regulations, designing using CAD
- Develop and describe standards and working methods.



PPL (Private Pilot License)– Pilot Cadet ATPL – Commercial Airline Virtual Flight Academy



- Aircraft system architecture
- System distribution analysis
- DC-DC and charging system examination
- Aircraft Electrics & Electronics
- Landing gear, aircraft mechanics

